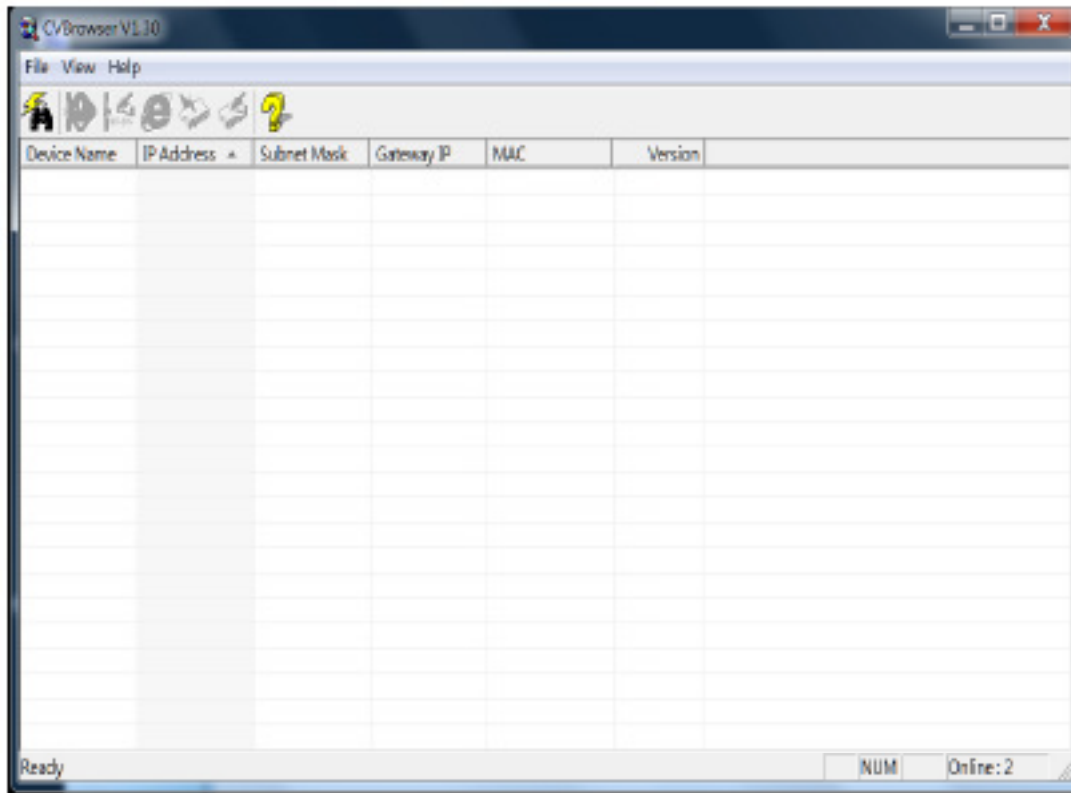


# E-P732 Quick Guide

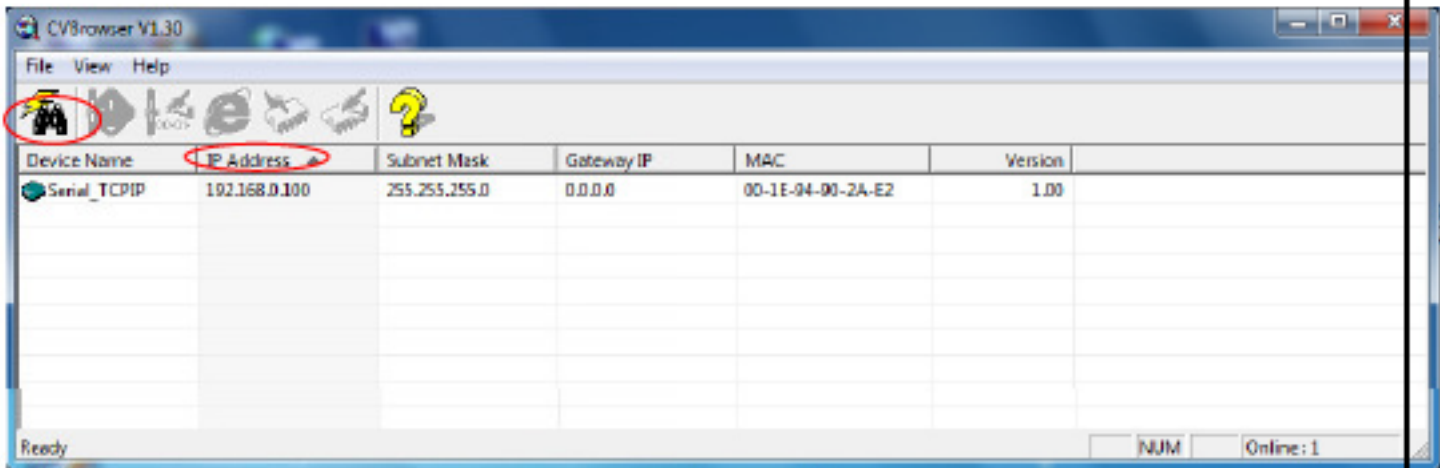
## Installation of IP Search Tool

- 1- Find out "CVBrowser.EXE" in the CD ROM, copy the file to your host computer.
- 2- Double click to run "CVBrowser.EXE", a window will pop up as below.



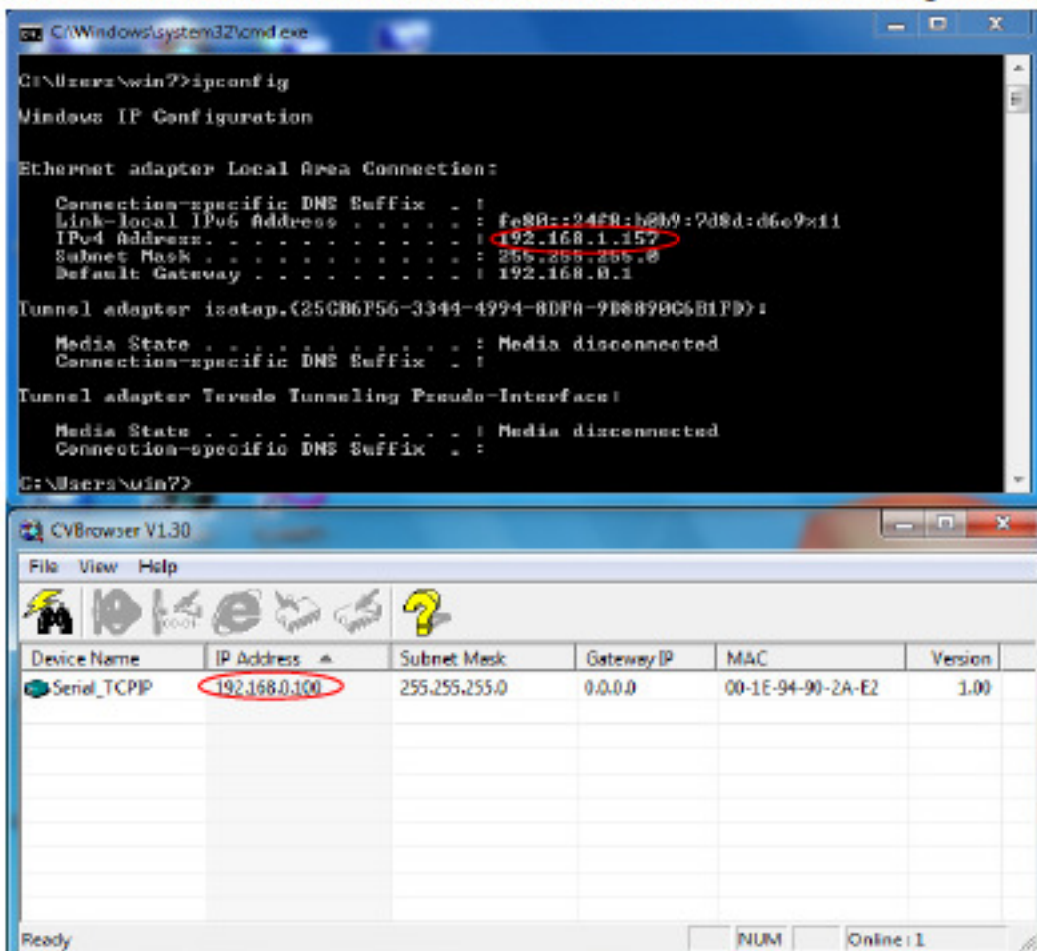
## Hardware Connection

1. Prepare a host computer, a Switch Hub and an E-P732 Converter.
  2. Connect host computer and E-P732 to Switch Hub with RJ45 Ethernet cable.
  3. Power on E-P732.
    - 3.1 Port 1(RS-232) LED: It is off if without connection. It turns red after connection. It turns blinking during data transmission.
    - 3.2 Port 2(RS-422/485) LED: It is off if without connection. It turns green after connection. It turns blinking during data transmission.
- Click the icon of Binocular "Refresh", it will search and show up the IP of Converter (Default IP: 192.168.0.100)..



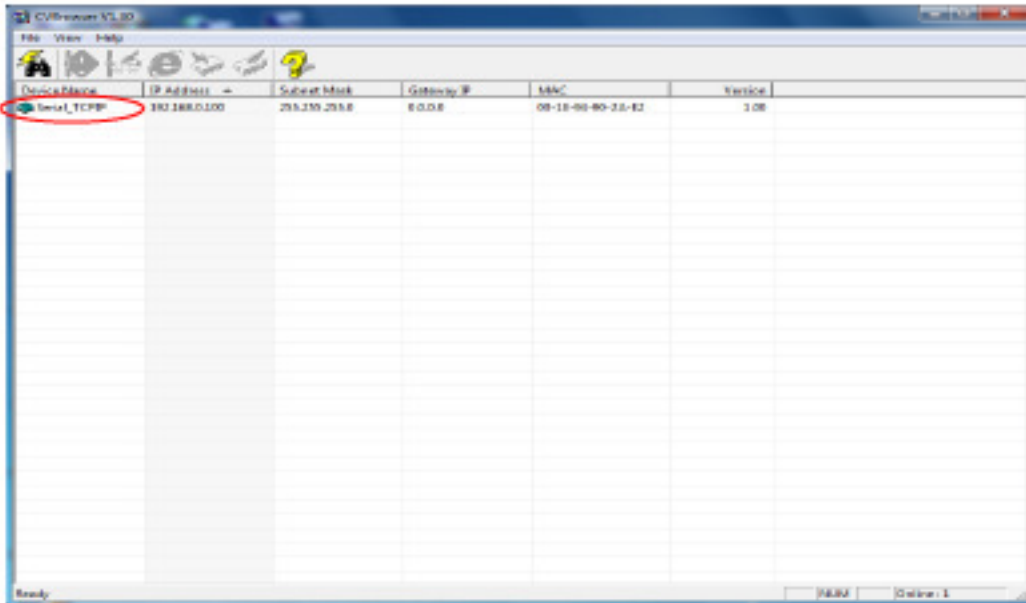
4.

5. Ensure the IP of host computer and Converter are in the same segment. If not in same segment such as 192.168.0.xxx or 192.168.1.xxx, choose one of following two ways to modify:

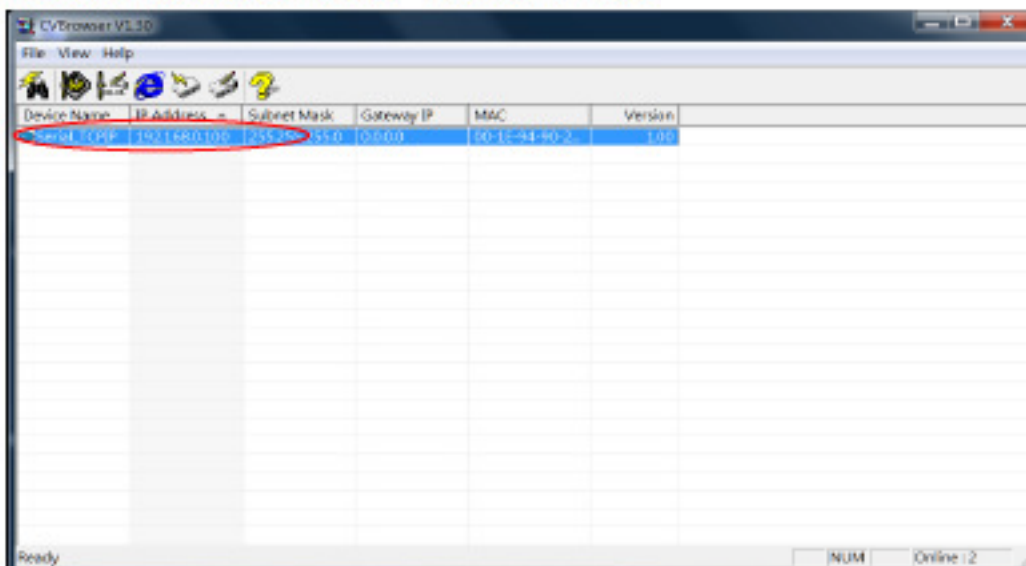


## IP modification #1: change segment of Converter

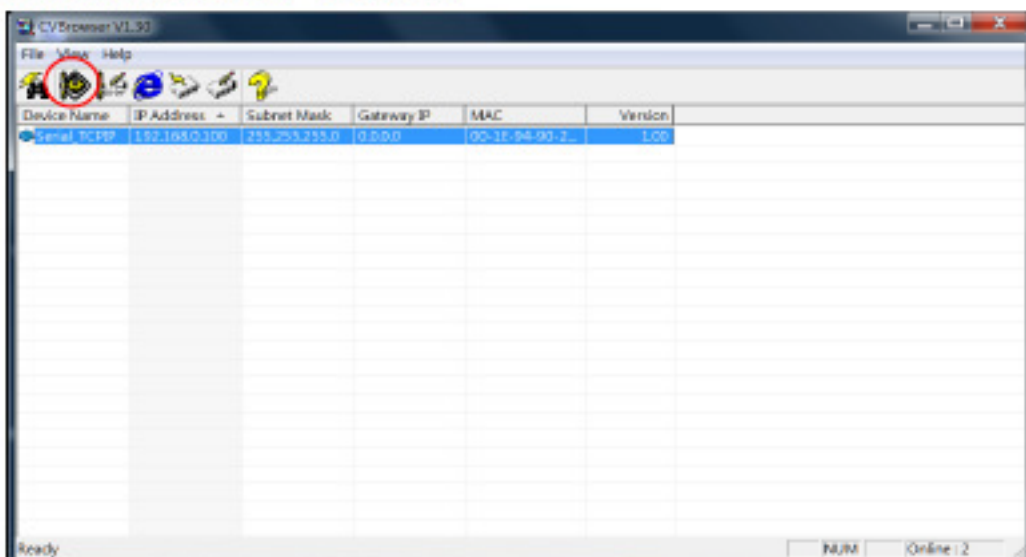
5.1.1 Move the mouse to the device name, as like "Serial\_TCPIP" per below.



5.1.2 Click on the device name. The row will present in blue color.



5.1.3 Click on the icon of "Modify IP".



5.1.5 Input the IP that you got from MIS people or authentic, and then Click on "Confirm" button.

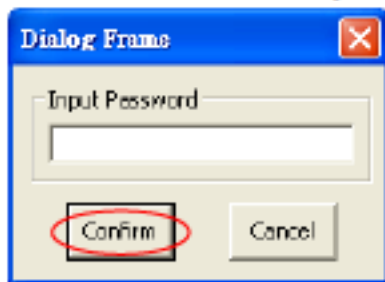


A dialog box titled "Dialog Frame" with a close button (X) in the top right corner. It contains three input fields for IP configuration:

- Input IP Address:** A text box containing "192 . 168 . 0 . 100".
- Input Subnet Mask:** A text box containing "255 . 255 . 255 . 0".
- Input Gateway IP:** A text box containing "0 . 0 . 0 . 0".

At the bottom of the dialog are two buttons: "Confirm" and "Cancel".

5.1.6 Click "Confirm" directly without Password.



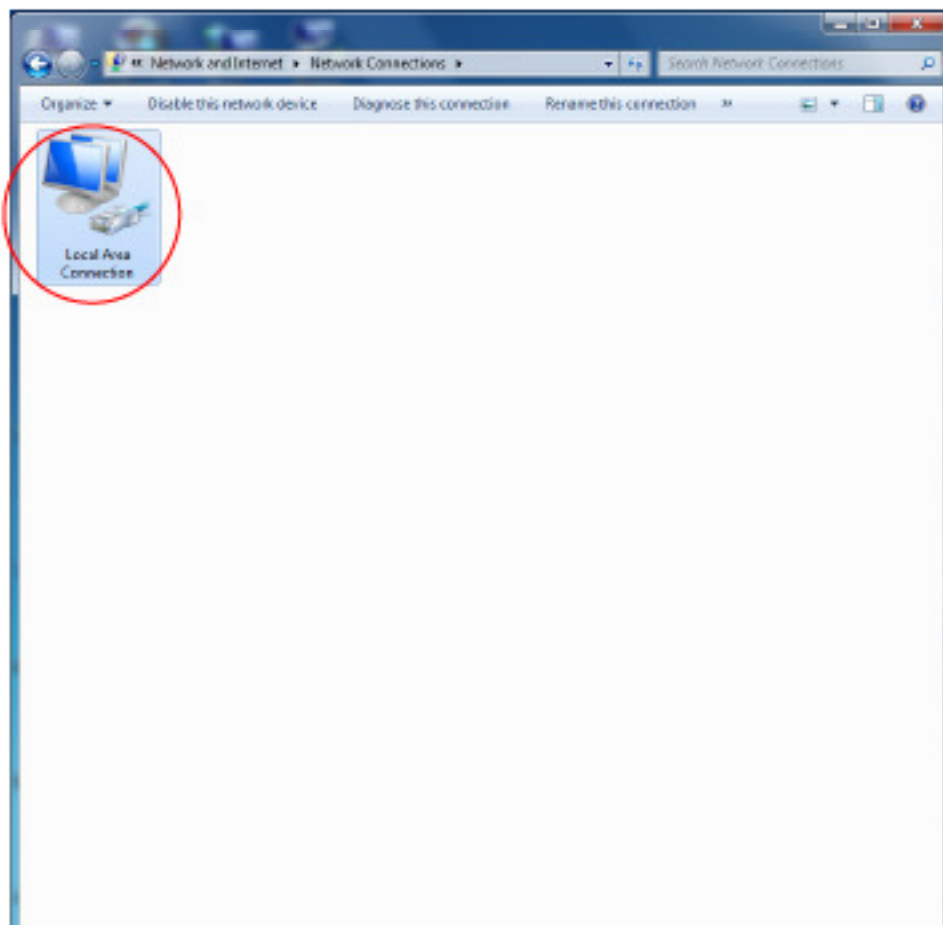
A dialog box titled "Dialog Frame" with a close button (X) in the top right corner. It contains one input field:

- Input Password:** An empty text box.

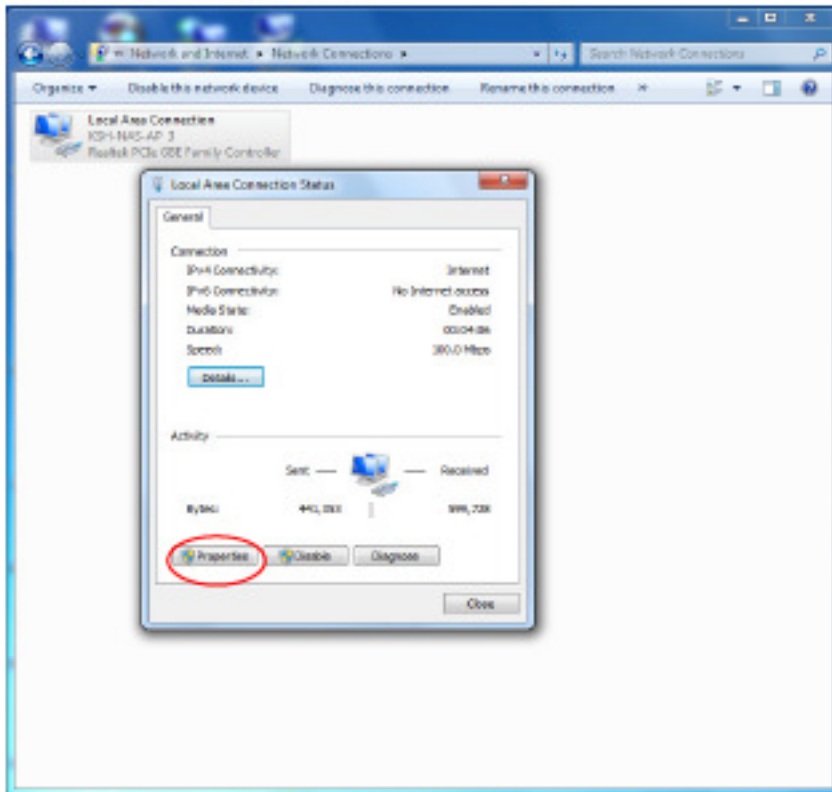
At the bottom of the dialog are two buttons: "Confirm" and "Cancel". The "Confirm" button is circled in red.

## IP modification #2: change segment of host computer

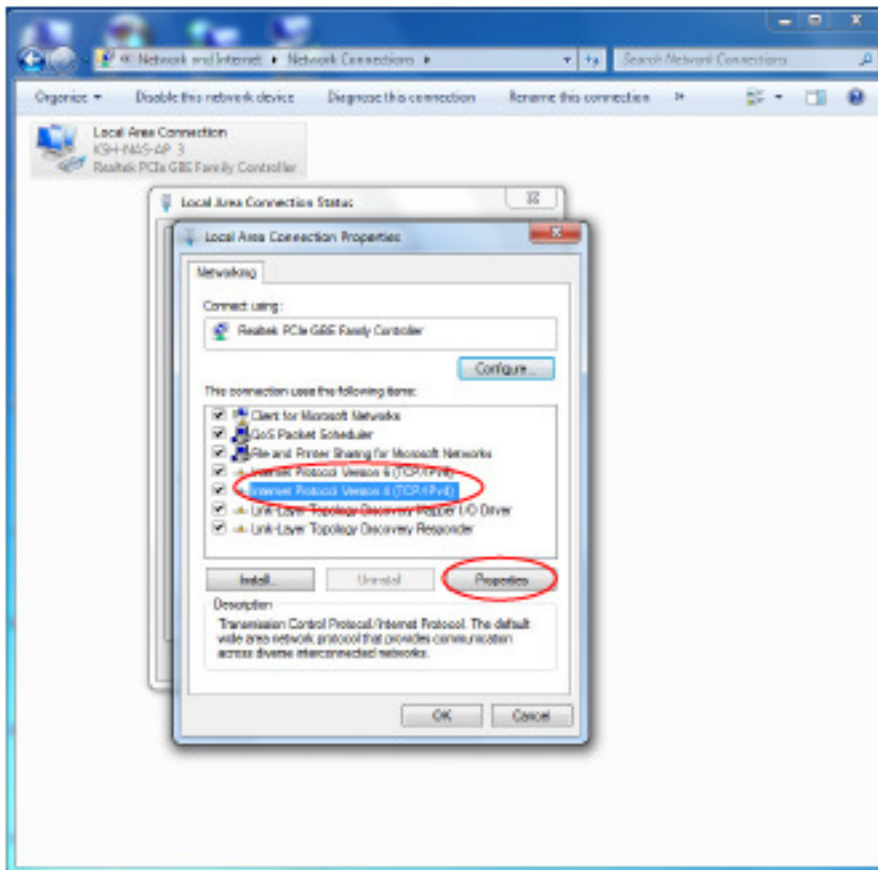
5.2.1 Click the "Local Area Connection" of Ethernet network.



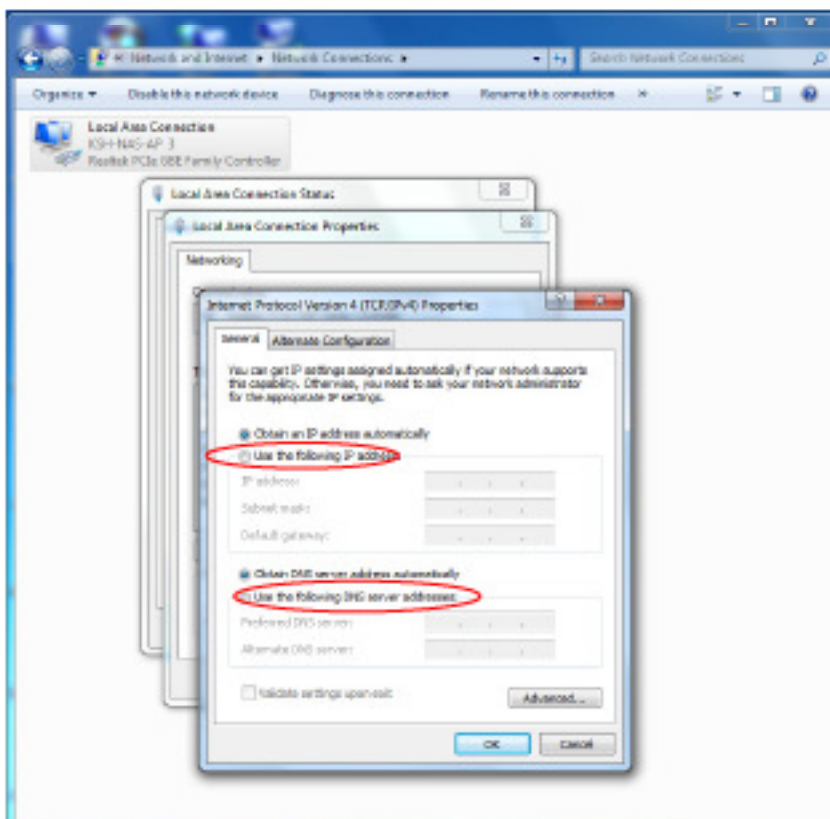
### 5.2.2 Click the "Properties".



### 5.2.3 Click the "Internet Protocol(TCP/IPv4)", and the click "Properties" at down right.

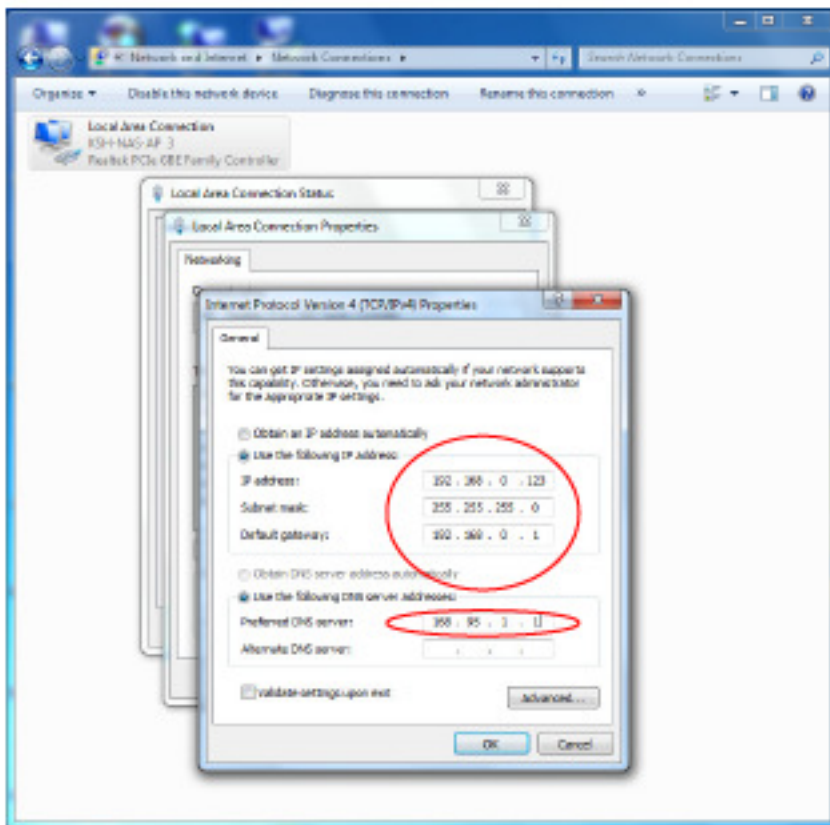


5.2.4. The "Properties" page will show "Obtain an IP address automatically" as default. Click "Use the following IP address"

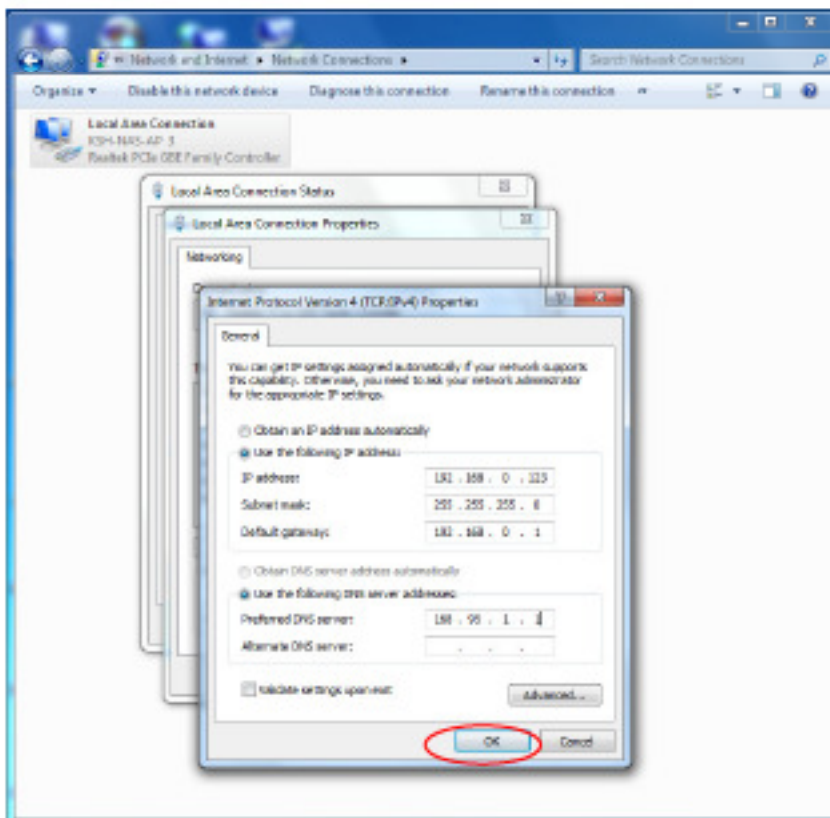


5.2.5 Key in the IP address, subnet mask, default gateway and preferred DNS server

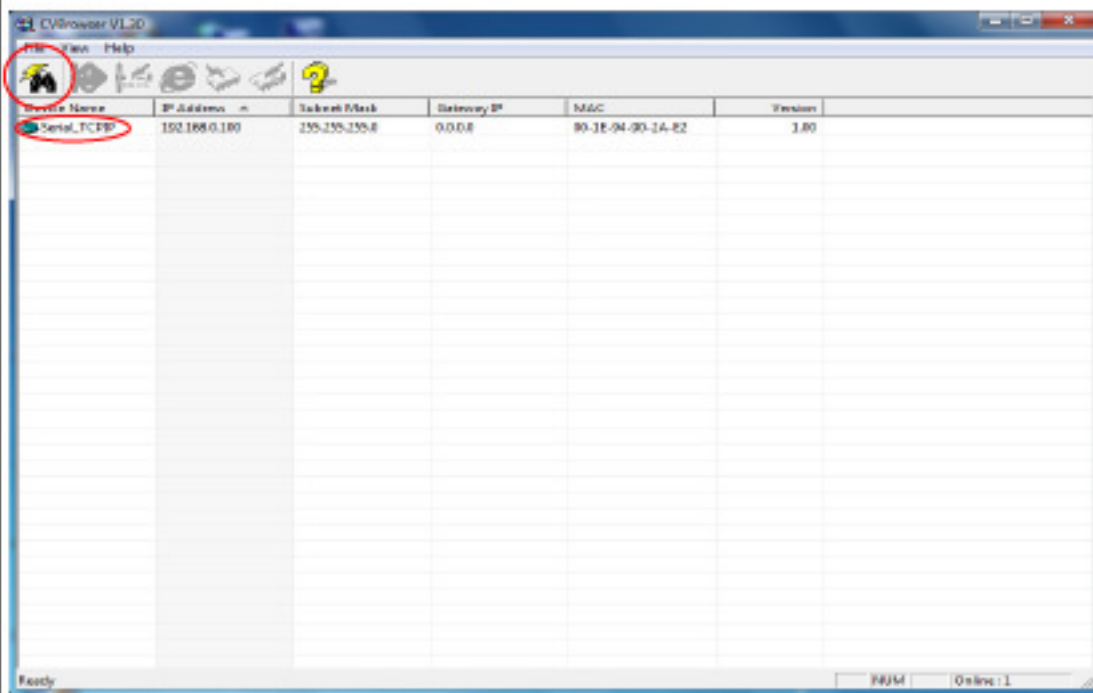




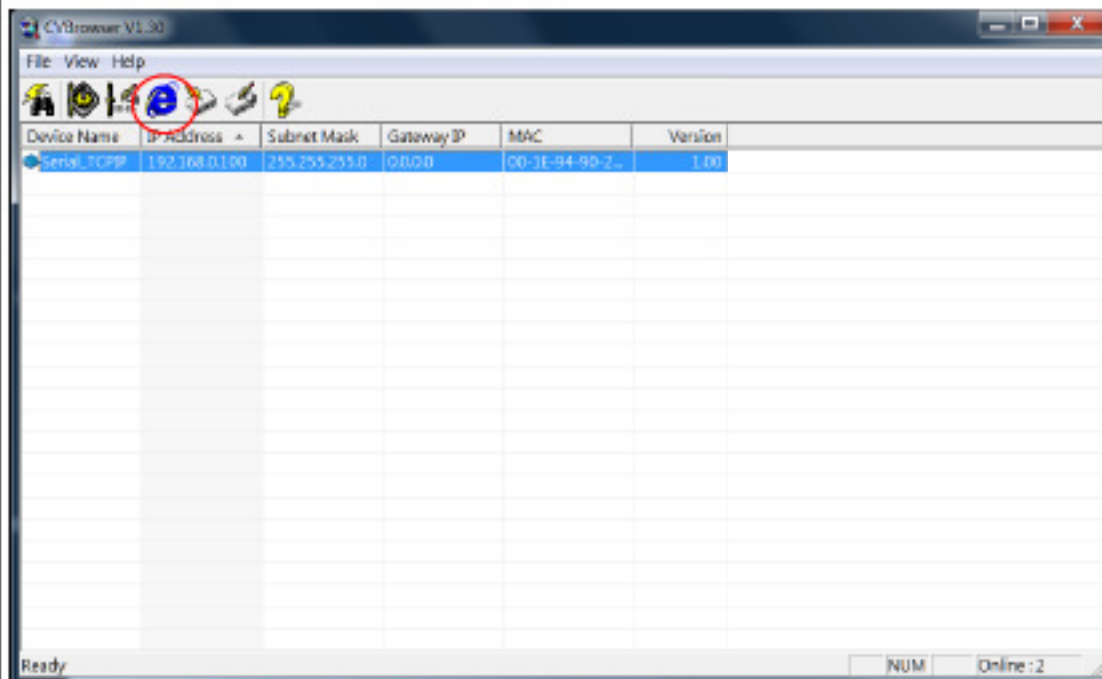
5.2.6 Press the "OK" button to close this window. You have successfully change IP address of host computer.



6. Click the icon of Binocular "Refresh" again, it will search and show up the IP of Converter, and then click the device name as like "Serial\_TCPIP" per below.

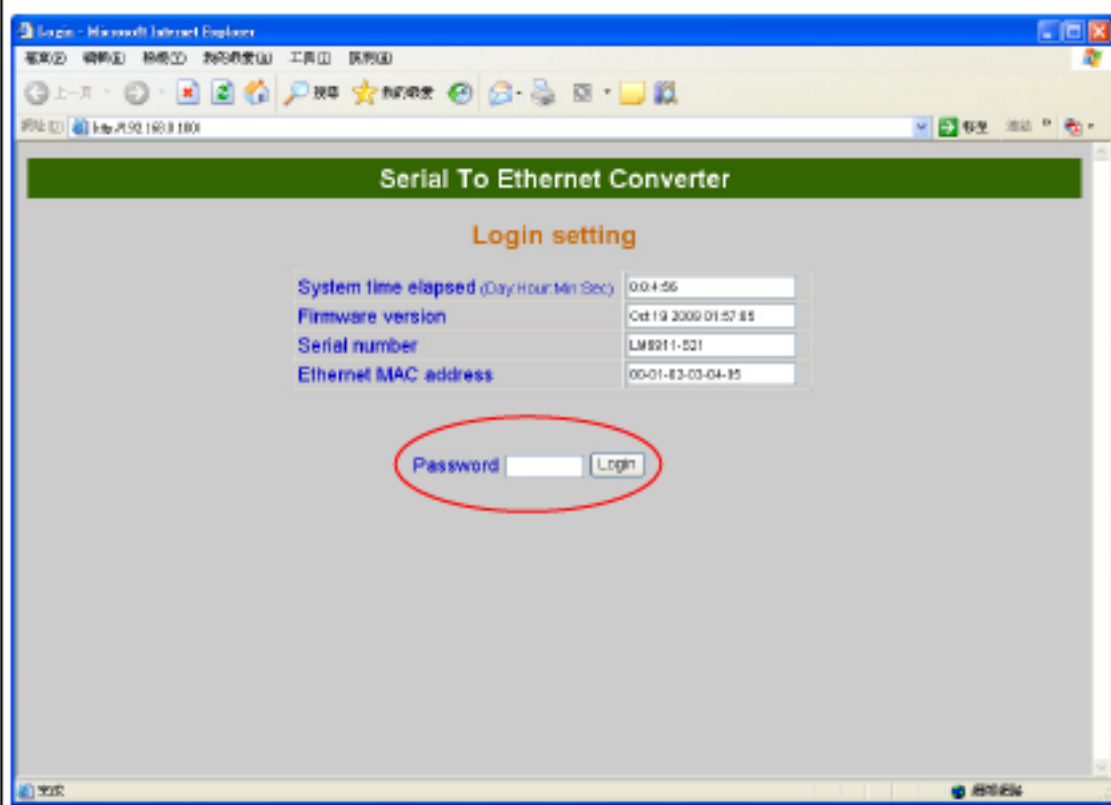


7. Click on icon of "WEB Browser".

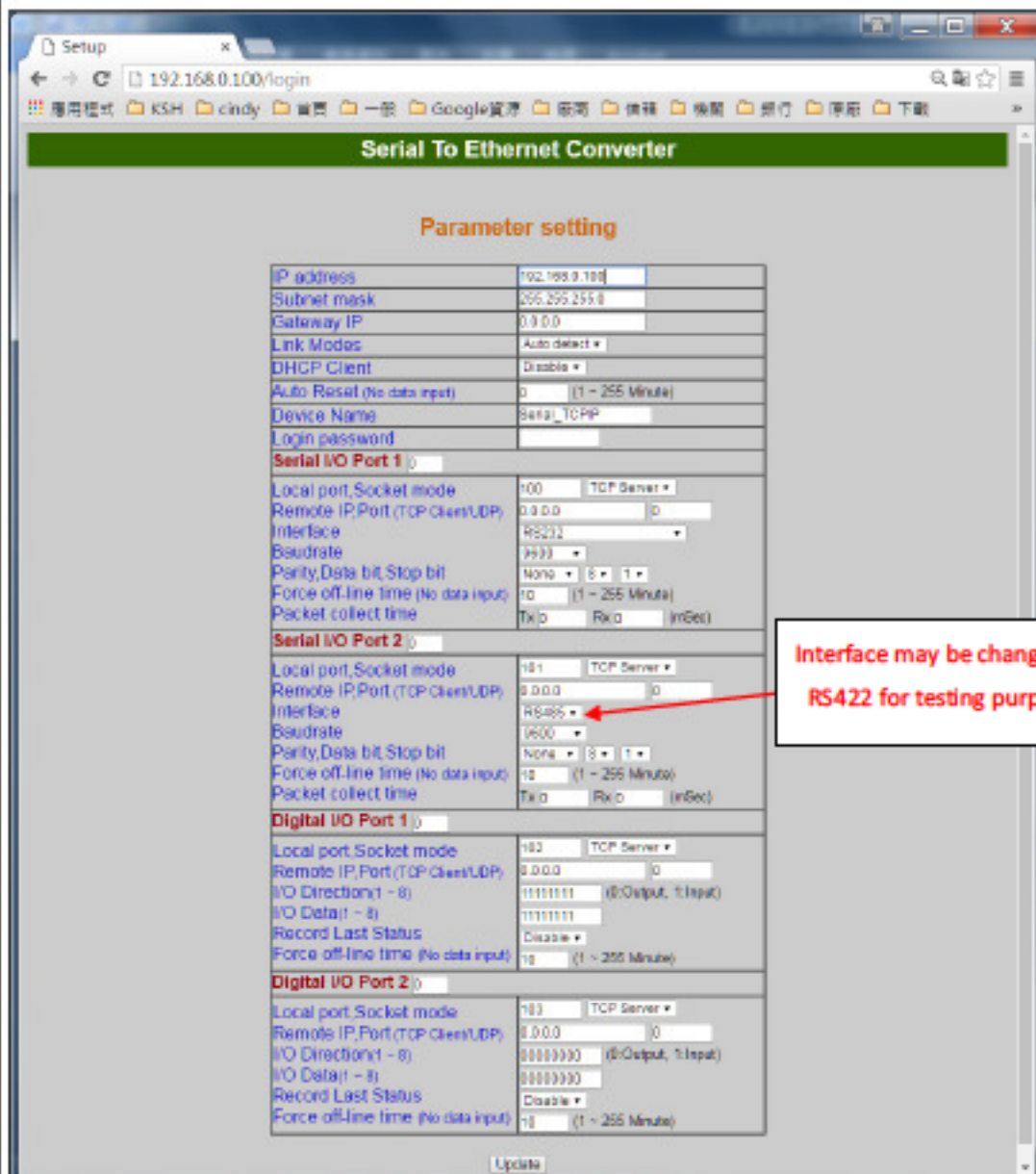


8. The browser will be opened. Just click the "Login" button without input to get into configuration page.





9. Configuration of Serial I/O Port. In order to implement running-test, don't change those parameters if you are not familiar with these configurations.



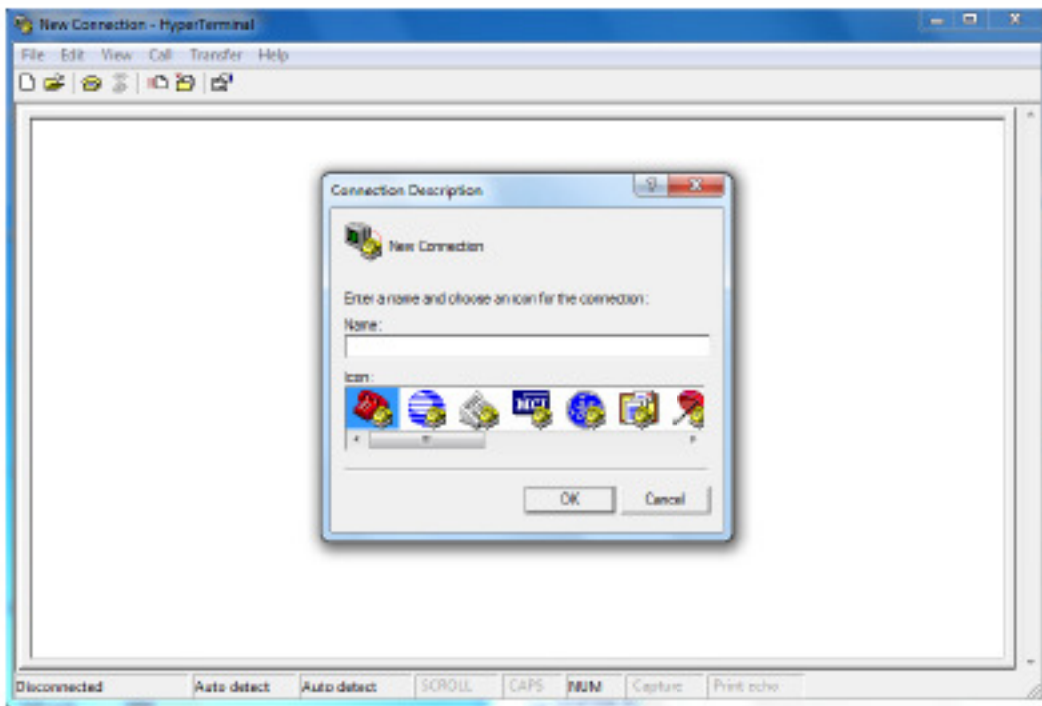
10. Click "Update" will save the configuration and leave this page.



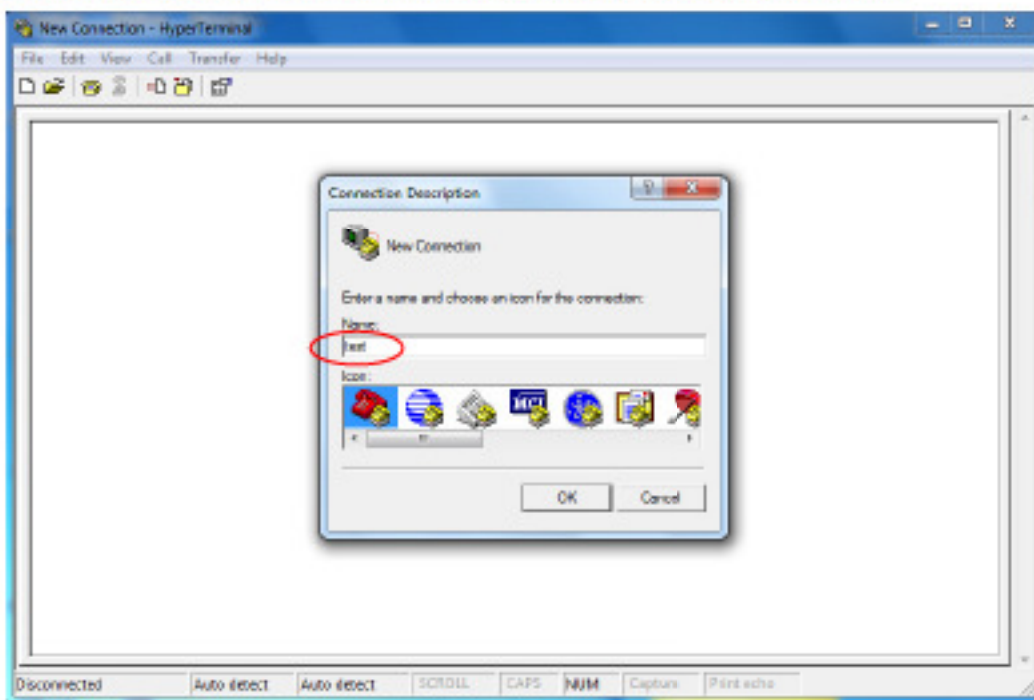
11. Testing procedure for data transmission

11.1 open the Hyper Terminal

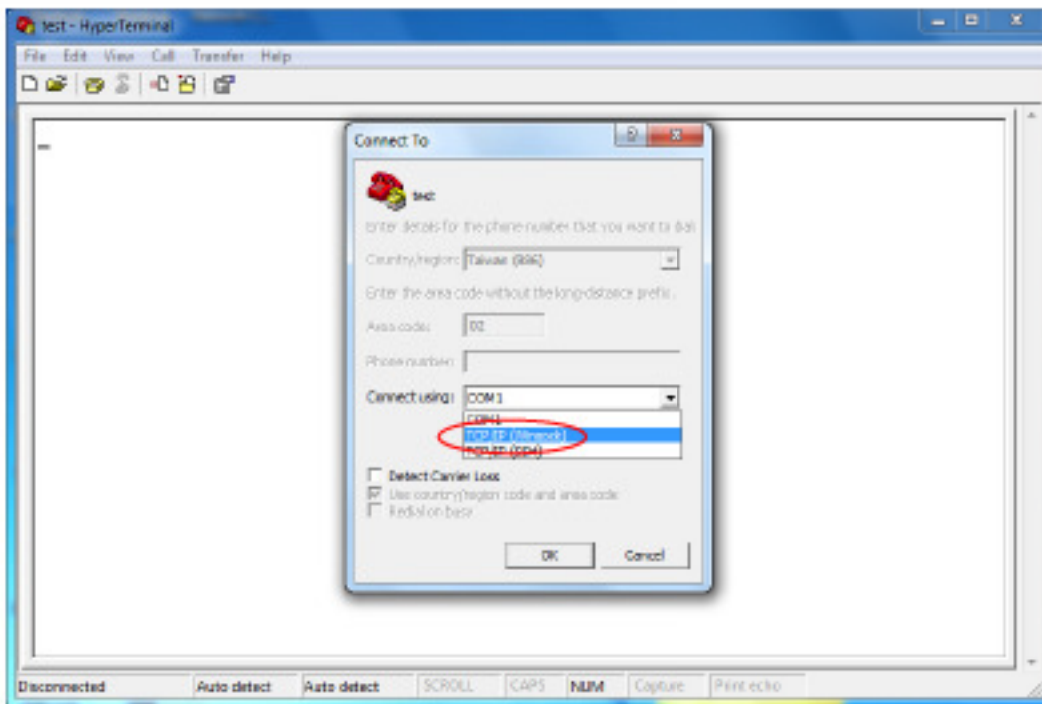




11.2 Key in a file name of connection (ex. test) and then click "OK".

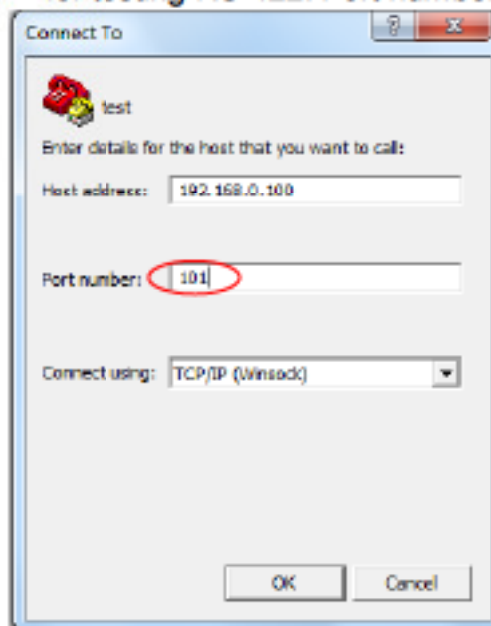
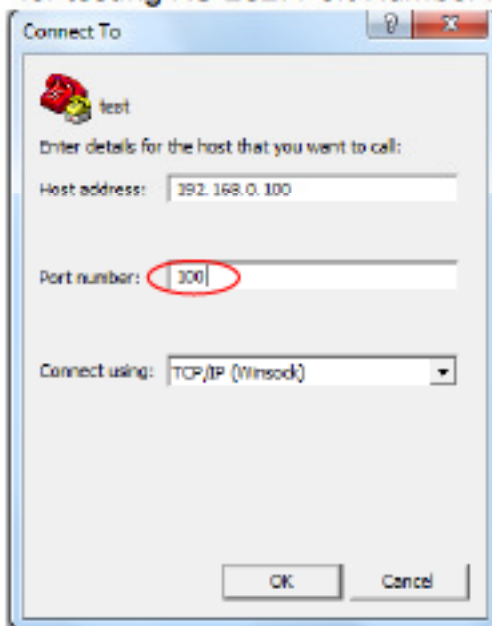


11.3 Choose TCP/IP, then click "OK".

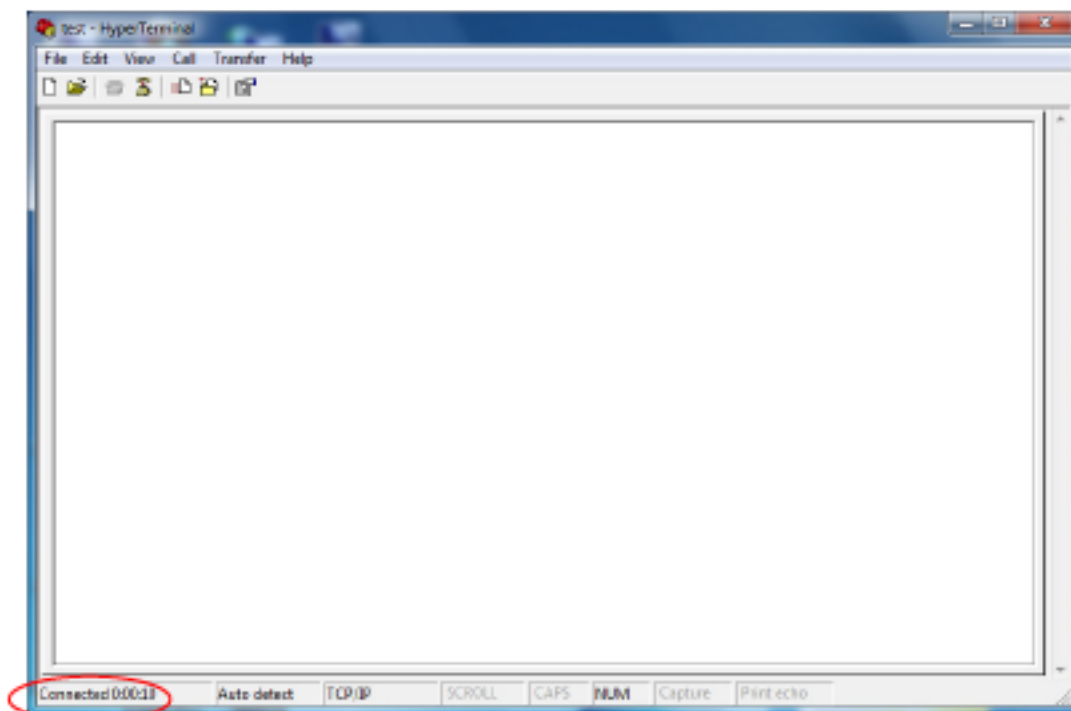


11.4 Key in the Converter's IP address and Socket port then click "OK".

\*for testing RS-232: Port Number is 100 \*for testing RS-422: Port number is 101



11.5 A HyperTerminal window will show up. The time counter start if connect is correct.

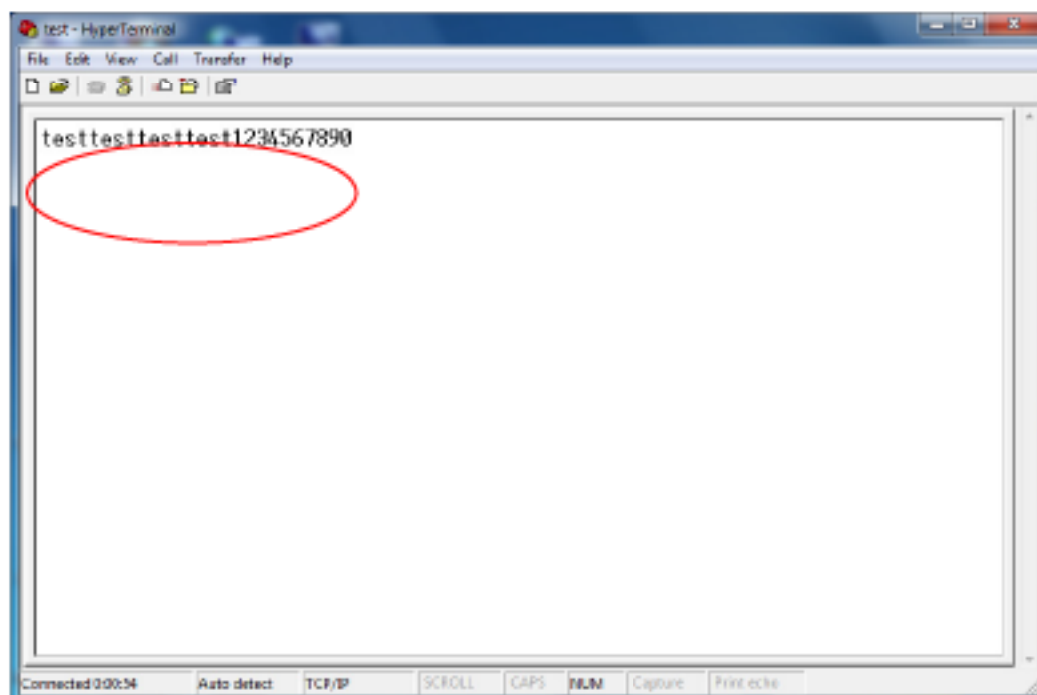


## 11.6 Echo Loop Test

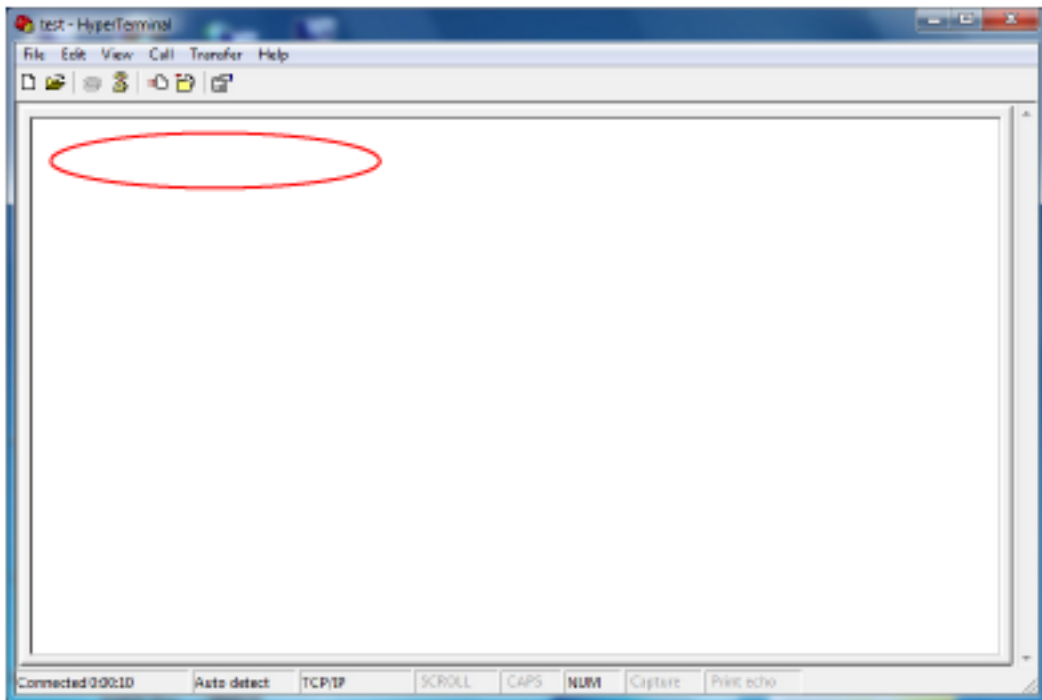
11.6.1 For RS-232 testing: Short DB9 NO. 2 pin and NO.3 pin circuit

11.6.2 For RS-422/485 testing: Short the green Terminal Block T+ to R+ and T- to R- or TX to RX.)

11.6.2 Key in any characters. If those characters show on the screen means the test is successful.



12. If not see any character present in the window, please check every setp from procedure of "Hardware Connection"



### 13. Reset

In any case you forgot the password or have incorrect settings must to set Converter back to default, use the Reset button.

12.1 Power on the Converter, press Reset button within 3~4 seconds or count the SYS LED blink 4 times and then releases the Reset button.

12.2 Don't press Reset button over 5 seconds, otherwise must be turn off and on again to do this process again)

